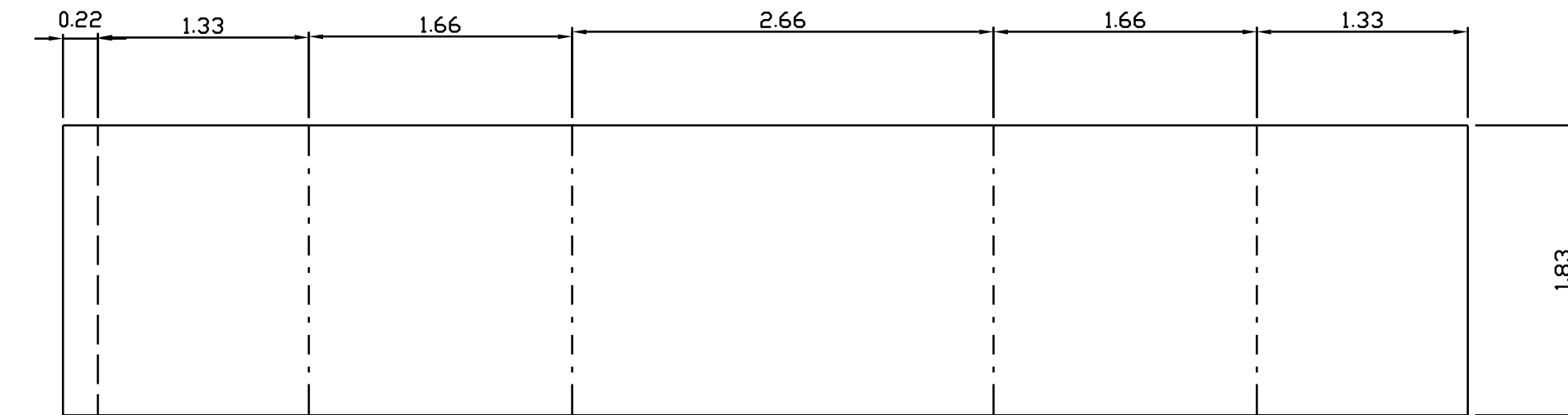


Water Tank

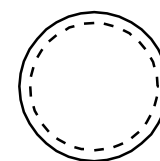
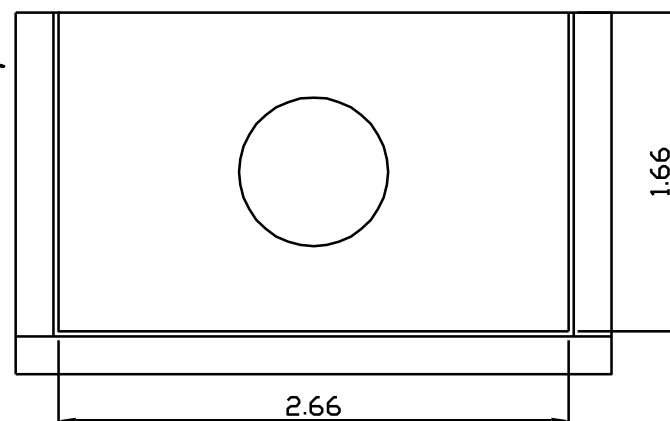
thin brass sheet



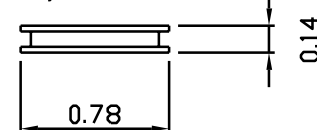
lap joint

4mm brass angle
solder to bottom of tank sides
and bolt to angle edging frames

tank top from thin brass sheet



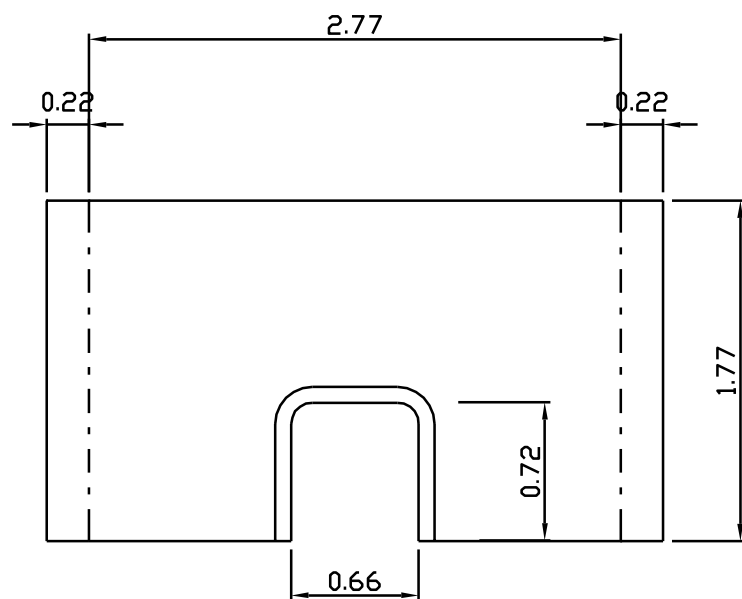
dummy tank filler



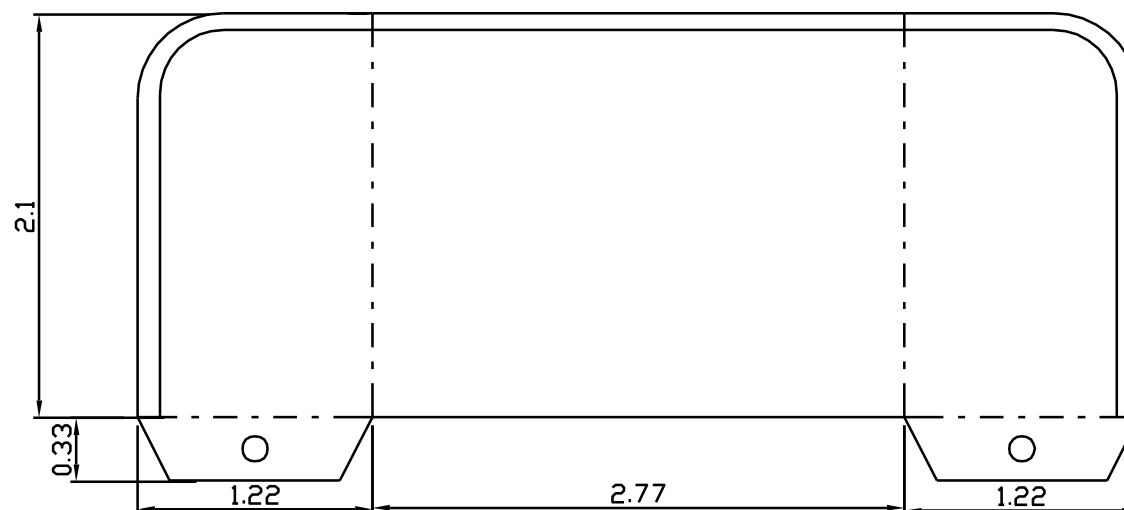
Coal Bunker

thin brass

edge with half round beading



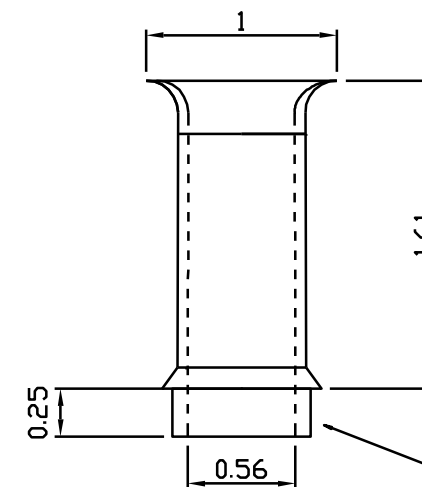
soft solder to rear of bunker



bolt through floor to angle edging frames

Chimney

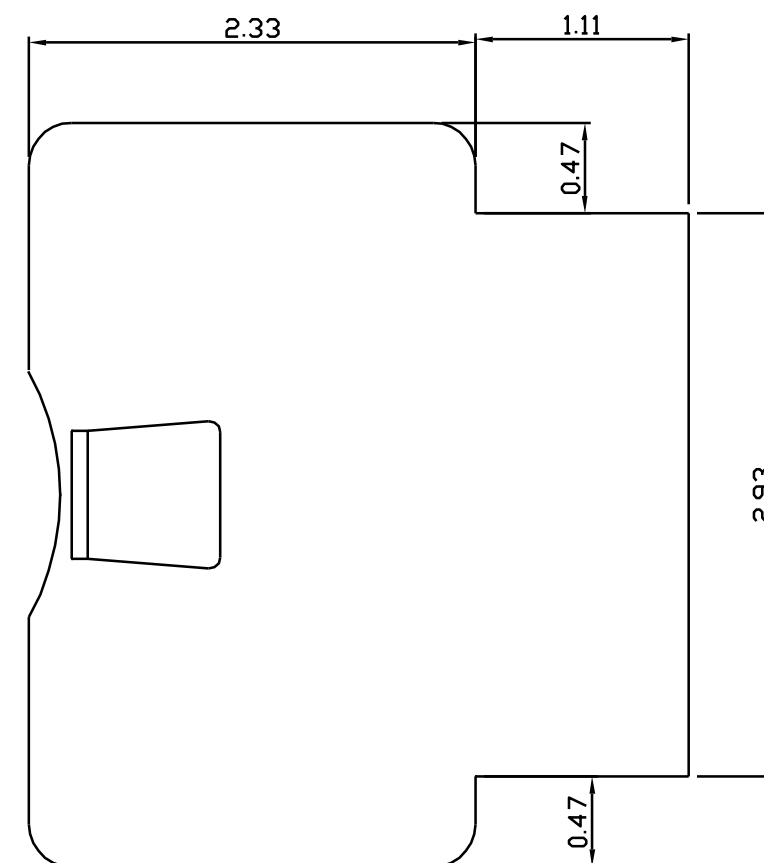
turn from rod, thick wall tube or fabricate



Spigot to fit flue (13mm)
Notch to fit over exhaust pipe

Footplate

1/16" (1.5mm) steel



RESCALED TO 7/8N2 1:13.7
2.10.07

Platwork for de Winton
Dave Watkins
9/8/97